

deep2drive

Next Generation Professional Fleet Driver Training Tool

deep2drive is an AI-powered training tool for professional fleets and their inhouse or external driver trainers, to use any time on service vehicles during their **day-to-day operations**. Allowing 4 weeks of pre-, in-, and post-training insights and advice, d2d **increases relevance and results** of eco-efficiency and risk prevention driver trainings, for fleet managers, drivers and trainers. Thanks to its **dash cams and vehicle performance capture**, d2d **detects & targets individual weaknesses, monitors & records progress** and facilitates **continuous corrective learning**. d2d is an **affordable and modular system** that can be fitted alternately into different types of vehicles, gasoline, electric or hybrid, **connected to a service platform**.

FEATURES



Critical **real-life data capture and AI-analysis** of the internal and external driving context and the **vehicle performance combined with driver actions** are turned into actionable insights and visualisations which are made available on the platform.



From the platform, remote trainers isolate the sensitive factors specific to each driver and vehicle. **Customised training programs** and a series of specific **intelligent indicators** are set up. While driving, indicators are monitored, and video clips are generated as **thresholds** are reached; then an edge-to-platform recording is automatically generated.



In the vehicle, trainers perform each training session with a **tablet app** providing a **set of tools for real-time results** processed by d2d. An in-app **timeline of events** and **video clip player** help explain errors immediately to the driver before **signatures** and closing of the completed assessment which is automatically recorded.



The driver from a dedicated web app and remote trainer from the platform **continuously interpret, assess, and refine** the training experience. The manager follows progress from the platform through clear visualisations, exportable into different formats (Pdf, Excel, PowerPoint).



Comprehensive and easy to use **reporting framework** with clear, **measurable training plans** and **ROI metrics** allows evidence-based reporting. Historical data remains available and comparable for all future training sessions powered by d2d.



* Distance training capabilities optional feature

Typical indicators:

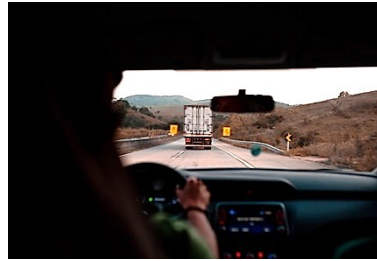
- Eco-efficient driving
- Vehicle control
- Safe distance
- Driver gaze & vigilance

BENEFITS

MANAGERS



DRIVERS



TRAINERS



Context-based Personalised Training

Save time, costs & get more relevance from targeted sessions performed in your vehicles during their day-to-day operations.

Improve your driving with personalised sessions in your professional vehicle while you work.

Identify and prioritise each driver's weaknesses and create tailored sessions.

Driver Training Matrix

Monitor reference points that reflect your internal driving rules and are specific to each activity.

Take control of your driving skills by better understanding your vehicle performance depending on how you drive it.

Streamline your assessment with vehicle real-life performance data and an easy-to-use decision-making framework.

Create comprehensive and comparable evaluation results.

Replay your video clips immediately in the vehicle and review with the trainer to better understand your errors.

Reinforce your assessment and the impact of the debriefing with video clips that you create during the session.

Continuous Improvement

Monitor the ROI for each training and for each driver.

Review your own clips with trainer's assessment from your web app.

Provide 3 weeks of remote follow-up from your web app interface.

Prepare informed training plans and budgets based on the relevant needs of each driver.

Have updates on what remains sensitive and keep improving every day.

Monitor all relevant data and add comments or further advice to the driver's web dashboard.

Transparent Reporting Framework

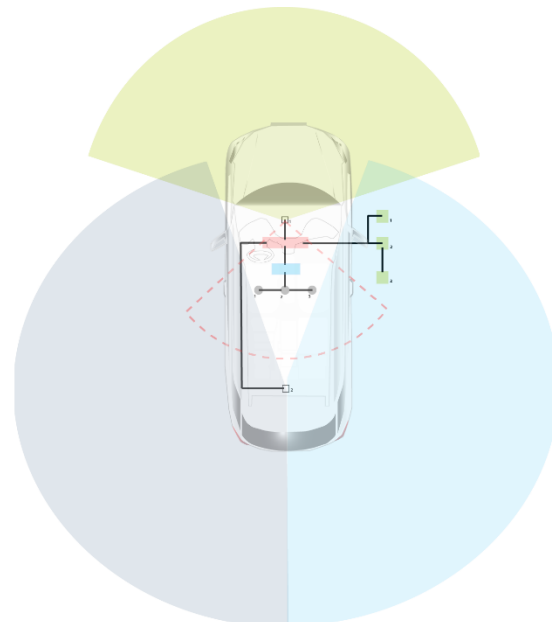
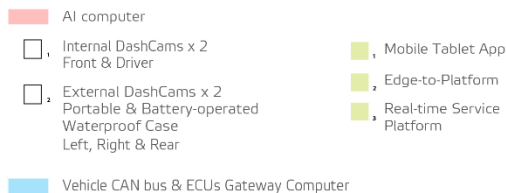
Compare progress and incident rate between trainings and for each business area.

Feel secure in the knowledge that video clips are only made available to you and the trainer.

Be prepared for the next training session with a full history on each driver, including what is critical, sensitive or needs improvement.

Create evidence-based reports to ensure CSR compliance.

IN-VEHICLE



CleanData is developing semi-autonomous driving technologies that can interact with drivers and vehicle computers to continuously provide them with the best decision to optimize driving in all circumstances. The platform uses on-board intelligent tools to capture and AI-analyse data on the behaviour and reactions of the vehicle and the driver, and the conditions in and around the vehicle. Deep Reinforcement Learning algorithms continuously improve human and machine decision-making.

CleanData wants to accelerate the transition to autonomous driving in complex urban traffic using today's vehicles, to empower businesses, commuters and cities to make urban driving easier, more sustainable and safer.